

# Portrait Painting with Eric Armusik *with oil paints* June 7 & 8 9am-3pm

Join renowned artist Eric Armusik for an immersive two-day portrait painting workshop, where he will guide students through his time-tested, realistic painting techniques. With over 30 years of experience as a professional artist, Eric has developed a pragmatic and structured approach to portraiture that simplifies the complexities of painting the human face.

Throughout this intensive workshop, students will learn to master Eric's "trinity" palette for mixing flesh tones. This unique palette allows for natural, lifelike skin tones with subtle transitions, depth, and vibrancy. Eric will provide in-depth demonstrations, breaking down each step of his process, from blocking in initial forms to refining details with precision and confidence. Designed for both beginner and advanced painters, this workshop will focus on essential skills such as color theory, value control, edge work, and brush techniques to create a compelling and realistic portrait.

Whether you're looking to refine your technique or take your portrait skills to the next level, this workshop offers an invaluable opportunity to learn from one of today's leading figurative and portrait painters. Don't miss this chance to elevate your artistry—reserve your spot today!

## *About Eric Armusik*

Born in 1973, Eric Armusik grew up in Pennsylvania's coal region, where he was first inspired by the academic realism of Catholic religious paintings. He earned a B.F.A. in painting with a minor in art history at Pennsylvania State University, focusing on Baroque art. Studying masterworks by Caravaggio and Artemisia Gentileschi in Italy profoundly influenced his work. Armusik continued to hone his skills at the Philadelphia studio of renowned portrait painter Nelson Shanks, Studio Incamminati, and in 2003, he represented the U.S. at the Florence Biennale. A finalist in multiple Art Renewal Center competitions, he was recognized as an Associate Living Master in 2015. He is an ambassador for Jerry's Artarama and a Signature Artist for BoldBrush.

In 2016, he began his largest project—40 large panels depicting Dante's Inferno—in collaboration with Dante scholar Christopher Kleinhenz. The series will be published and exhibited in a major museum upon completion.

His work has been exhibited in galleries and museums, including the Salmagundi Art Club, National Arts Club, and Allentown Art Museum. His paintings are held in numerous prestigious private collections and have been featured in The New York Times, Wall Street Journal, American Art Collector, and more.

*Please complete this registration form and send along with your check (made out to BAA) to Lois Dieterly, 2005 Redwood Ave, Wyomissing, PA 19610. Any questions please call Lois 610.763.0851, or email [loisd Dieterly@gmail.com](mailto:loisd Dieterly@gmail.com) or register online at <https://www.berksartalliance.com/eric-armusik-portraits.html>*

---

**Eric Armusik Portrait Workshop** **\$365<sup>00</sup>**  
**June 7 & 8, 2025, 9am-3pm at the Warehouse Studio** **\$375 for nonmembers**

700 Lancaster Ave. (at the corner of Lancaster and Angelica), Reading PA 19607, 610.223.5085  
*Light snacks will be offered in the morning, but we will break for lunch so pack lunch or order from a nearby restaurant.*

Name \_\_\_\_\_

Address \_\_\_\_\_

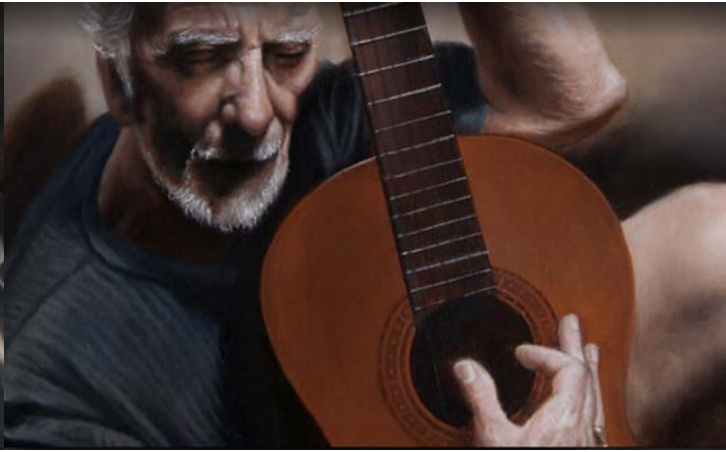
Phone \_\_\_\_\_ Cell Phone \_\_\_\_\_

EmailAddress \_\_\_\_\_

# Supply list for Portrait Painting with Oils Workshop:

*I have a kit on Jerry's Artarama if people would like to go to this link:*

*<https://www.jerrysartarama.com/eric-armusik-signature-lukas-1862-artist-oil-paint-sets>*



## **Oil Paint:**

Titanium White  
Yellow Ochre  
Cadmium Red  
Raw Umber  
Van Dyke Brown  
French Ultramarine Blue  
Ivory Black

## **Brushes:**

4 Filbert brushes from 4, 6, 8, 10  
3 Fine Tip Round brushes 0/10 - 1, 2  
1 large 1" Flat brush for background work

## **Medium:**

Liquin Fine Detail  
Turpenoid or variation of low odor thinner

## **Miscellaneous:**

Palette (wood or whatever you prefer)  
Rags  
Solvent cups or small glass jar for medium

## **Panel:**

11 x 14" AlumaComp panel or smooth wood or masonite panel (not canvas and no texture)

Panels should be painted with 3-4 coats of acrylic or oil gesso and sanded smooth with a 200 grit sandpaper for a smooth surface prior to class. If the panel is already prepared with a smooth gesso surface nothing is required.

