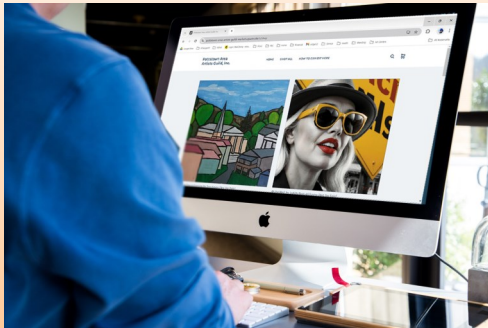




For Upcoming Month **ONLINE GALLERY VIRTUAL SHOW** Call for Artists



DEADLINE to enter & pay
25th of the previous month
No changes will be accepted after that time

OPEN to PAAG Members and Non-Members

CONNECTING ARTISTS WITH PATRONS from wherever they are!

ELIGIBLE ARTISTS

ALL 2D and 3D Artists

SHOW LOCATION

Website Store

GALLERY HOURS

- 24/7

ARTWORK REQUIREMENTS

- **Originals Only** in Painting, Drawing, Mixed Media, Sculpture, Printmaking, Collage, Photography, Digital Art
- **1 piece Maximum** not previously shown in the Online Gallery
- Artwork can be for Sale or Not for Sale (NFS)

NOT ACCEPTABLE

PAAG reserves the right to reject artwork not meeting the Artwork Requirements

ARTWORK IMAGES

File Name

- LASTname_FIRSTname_TITLE
(William_Joan_Calm)

Image Requirements

- 72 dpi
- 1200 pixels longest side

NOTE: Please resize your image when downloading it from a phone.

ENTRY FEES - Non-Refundable

- **FREE to PAAG Members**
- **\$10 for non Members**
- Non-members may join PAAG for \$35 then pay the member fees.
Membership runs Sept 1st through Aug 30th and is well worth joining ANY TIME of the year!

ENTRY PROCEDURE

- **Online Form**
<https://www.paag.info/submission-online-gallery>

If you need help with the form, contact
Jeanne Petrosky artgal32@gmail.com

SALES

- **Total Commission 10%**
- Artist will be notified of an interested buyer or a sale.
- The artist will be responsible for contacting the buyer and arranging for delivery of the artwork. If the artist cannot negotiate acceptable delivery arrangements within 30 days of receiving notice of the sale, the artist must inform PAAG to have the purchase refunded.
- PAAG will collect 6% PA Sales Tax and remit to PA Dept of Rev
- A W-9 is required for sales of \$600 +
- Artist will receive a check for the balance shortly after the close of the show.

Submission to this show grants PAAG permission to use your art images for promotional and educational purposes.